



Agilent RNA 6000 Nano

Checking Your Agilent RNA 6000 Nano Assay Results

RNA 6000 Nano Ladder Well Results

To check the results of your run, select the Gel or Electropherogram tab in the *Data* context. The electropherogram of the ladder well window should resemble those shown below.

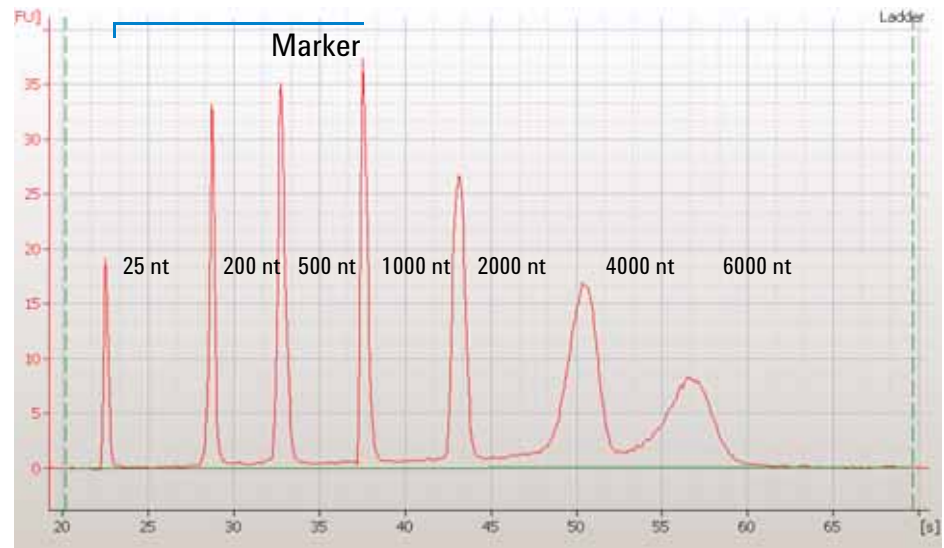


Figure 1 RNA 6000 Nano ladder



Major features of a successful ladder run are:

- 1 marker peak
- 6 RNA peaks (2100 expert software calls for 5 first ladder peaks only)
- All 7 peaks are well resolved
- Correct peak size assignment in the electropherogram

If the electropherogram of the ladder well window does not resemble the one shown above, refer to the *2100 Expert Maintenance and Troubleshooting Guide* for assistance.

RNA 6000 Nano Sample Well Results

To review the results of a specific sample, select the sample name in the tree view and highlight the *Results* sub-tab. The electropherogram of the sample well window for total RNA (eukaryotic) should resemble the one shown here.

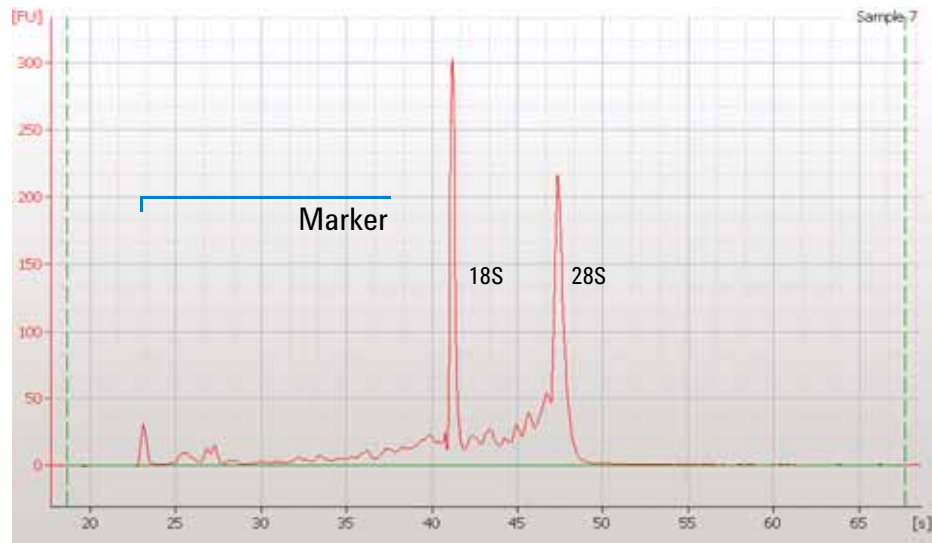


Figure 2 RNA peaks of a successful sample run

7 Checking Your Agilent RNA 6000 Nano Assay Results

RNA 6000 Nano Sample Well Results

Major features of a successful total RNA run are:

- 1 marker peak
- 2 ribosomal peaks (with successful sample preparation)

By selecting the *Results* sub-tab, values for the calculated RNA concentration, the ribosomal ratio and the RNA Integrity Number (RIN), implemented with 2100 expert software version B.02.02 or higher, are displayed.

NOTE

You can change the baseline by shifting the left and right dashed lines. This will alter your results. For information on the RNA alignment please refer to the *2100 Expert User's Guide* or *Online Help*.

The electropherogram of the sample well window for mRNA should resemble the one shown here.

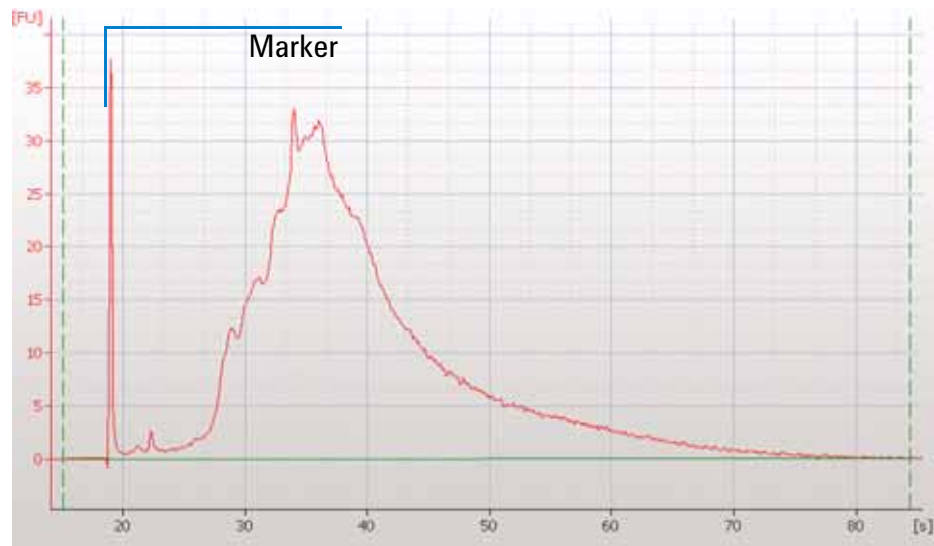


Figure 3 mRNA peaks of a successful sample run

Major features of a successful mRNA run are:

- 1 marker peak
- Broad hump (with successful sample preparation)
- Contamination with ribosomal RNA shown as 2 overlaid peaks (if present)

Index

Numerics

2100 expert software, 9

A

assay menu, 21
assay protocol, 13

B

bioanalyzer, 6

C

chip priming station, 7, 16
chip run, starting, 21
chip selector, 8
cleaning, 23

D

data context, 24
dye concentrate, 4, 15

E

electrode, 13, 23
 cartridge, 8, 19
 cleaner, 4, 13, 23
 cleaning, 23
 decontaminating, 13
electropherogram, 24, 25
essential measurement practices, 10

F

file prefix, 21

G

gel matrix, 4, 14
gel-dye mix, 4, 15, 16

H

heating block, 5

I

instrument context, 9, 21

L

ladder, 18, 24
ladder well window, 24
loading
 gel-dye mix, 16
 ladder, 18
 marker, 17
 samples, 18

M

marker, 4, 17, 25
microcentrifuge, 5, 14
microcentrifuge tubes, 5
mRNA electropherogram, 26

P

pipettes, 5
preparation
 gel, 14
 gel-dye, 15
protocol, 13

R

reagents & supplies, 4
results, 24, 25
RNA 6000 ladder, 4
RNA assay results, 24
RNA ladder electropherogram, 24
RNase-free water, 5
RNaseZAP, 5, 13

S

sample well results, 25
sample well window, 25, 26
samples, 18
set up
 base plate, 7
 bioanalyzer, 8
 chip priming station, 7
 syringe clip, 7
 vortex mixer, 8
specifications
 analytical, 4
 physical, 4
spin filter, 4, 14
syringe, 4, 7
syringe clip, 7

T

tubes, 4, 5

www.agilent.com

In This Book

you find the procedures to analyze RNA samples with the Agilent RNA 6000 Nano reagent kit and the Agilent 2100 expert bioanalyzer.

© Agilent Technologies 2001, 2003-2006

Printed in Germany
08/2006

